

IMPORTING A MODEL IN ECOTECT FOR ANALYSIS

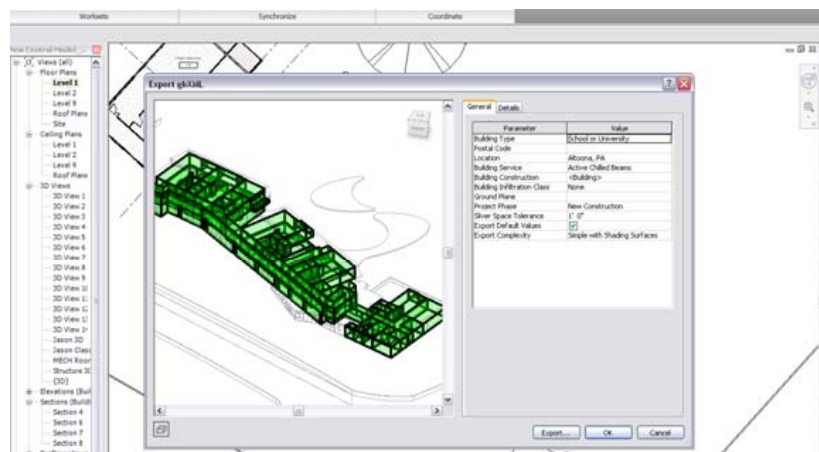
In order to analyze a design/model in Ecotect, certain file extensions are required for certain types of analysis. Ecotect being primarily an analysis tool, the preferred table of file formats used for various analyses is provided.

Software	File Format	Analysis	Notes
Autodesk® Revit®	.gbxml	Thermal Comfort/Daylighting	Requires room tags
Autodesk® Revit®	.dxf	Shadow Studies/Solar Reflection	Only transfers geometry; No thermal/daylighting analysis
Autodesk® Autocad®	.dxf	Shadow Studies/Solar Reflection	Only transfers geometry; No thermal/daylighting analysis
Autodesk® 3DS Max®	.3ds	Shadow Studies/Solar Reflection	Only transfers geometry; No thermal/daylighting analysis

The imported model can then be edited and modified accordingly.

Importing Revit Model into gbXML for input in Ecotect energy modeling program

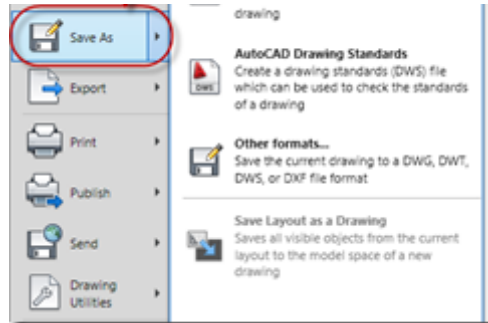
1. Create Revit model with all windows, doors and walls included.
2. To export a model, you first have to be in a 3D view of the model in Revit.
3. Use the room tag (Revit Arch) feature to select the different rooms in your model.
4. Use room or space separators to create rooms.
5. When placing spaces or room, Revit starts with the number 1 for the first room tag number. If you wish to make the number correspond to the first floor simply change the first room you tag on the floor to 100 and every tag after will count up from 100.
6. Select all spaces, click element properties, and make sure the “Upper Limit” is set to the floor above and the “Limit Offset” and “Base Offset” categories are set to 0’0”.



7. Click on the Revit icon, highlight Export then Export as a gbXML.

Importing Revit Model into dxf for input in Ecotect energy modeling program

1. Using the Visibility / Graphic Overrides menu in Revit you can make invisible / turn off elements that are unnecessary in Ecotect Analysis.



2. Go to Save As > Other formats and then save as a dxf file format or other formats as well.